

# Intimate Honeymoon at KainguU



## 5 NIGHT ROMANTIC SAFARI

## \$2,290

per person

### Your Honeymoon -Your Way.

At KainguU Safari Lodge you can spend your honeymoon the way You want to. Take Breakfast in bed at any time, canoe through a myriad of channels and stop for a glass of champagne on an island or leave camp at 05:30 in search of a leopard.

Classic safari activities such as game drives, nature walks and river cruises are on offer as well as sundowners on large granite boulders, lantern lit bush dinners or a plunge in our natural rock pools. Come and experience the remoteness and vastness of the Kafue, be spoilt by the friendliness of Zambian people and feel the heartbeat of Africa.

<b>Duration:</b>	5 Nights: KAINGU SAFARI LODGE (Central Kafue)
<b>Cost:</b>	\$2,290 USD per person
<b>Includes:</b>	Accommodation, Transfers*, Meals & Snacks, Local drinks, Laundry service, Activities, 10% Service Charge, Kafue Conservation bed night levy, Kafue National Park Entry Fees

Experience the Kafue National Park and its natural diversity on a tailor made safari. This trip is perfect for those wanting to immerse themselves in the majestic Kafue NP, away from the crowds.

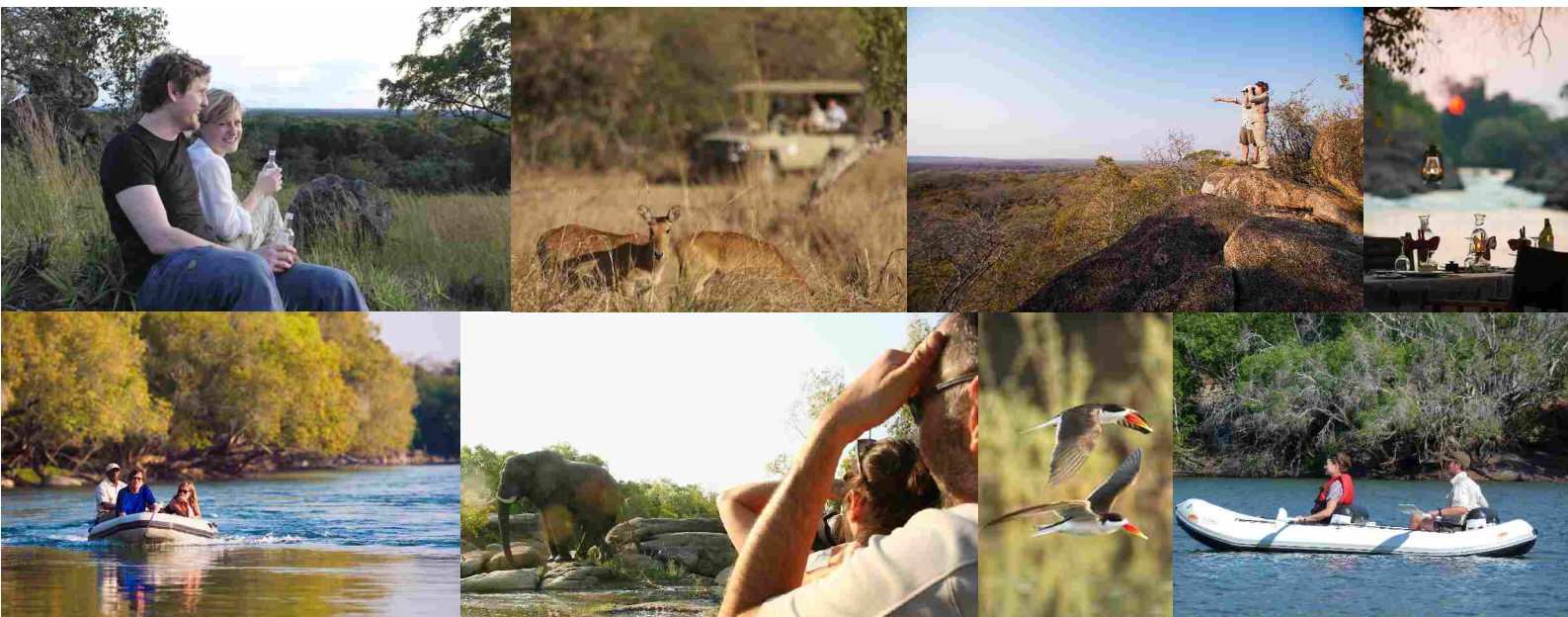
### Notes (Full terms and conditions on following pages):

- Available from: 1<sup>st</sup> of March to 31<sup>st</sup> December 2016, subject to availability.
- Rates are per person, sharing.
- Arrival & Departure option included in above rate: \*Arranged Road Transfers to and fro Lusaka.
- Fly In or Self Drive options available. Enquire for rates and itinerary.
- Rate inclusions: As listed above.
- Rate exclusions: Premium drinks, International airfares, Travel insurance.
- Good physical condition is recommended for the canoeing and walking safaris.

### For Reservation & Booking Contact:

[lodgemanager@kaingu-lodge.com](mailto:lodgemanager@kaingu-lodge.com)

# Customize Your Itinerary



## Be active when you want to be.

With the assistance of our experienced guides you can schedule your activities to suit you. Explore the magnificent Kafue river on a relaxing boat cruise, canoe trail or in a rubberduck for the more adventurous. Wonder at the wildlife on an early morning and afternoon game drive. The large granite boulders around the lodge add a wonderful feature to our safari nature walks.

## Have time to relax.

Our honeymoon chalet has a private deck overlooking the river and a large outside bath. Here you can unwind, listen to the sounds of the African bush and feel first hand the pulse of Africa. Take a leisurely walk to our natural pools amongst the rapids or enjoy a day on an island with your book, a delicious picnic and a fishing rod.

## Enjoy.

Why not have breakfast on an island, sundowner on top of a large rock or a private lantern lit dinner at the rapids?

We are here for you.

Day 1	Day 2	Day 3	Day 4	Day 5
	RELAX			
arrive in		see an		
paradise	& explore	Elephant!	catch a fish	
	the river			dine in the
				bush

# KaingU Safari Lodge



## KAINGU SAFARI LODGE

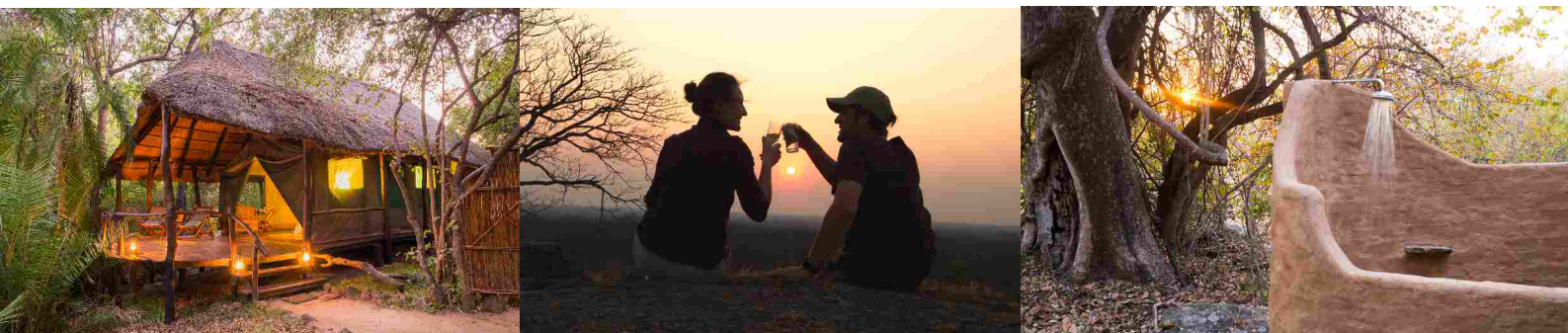
Set in an area of pristine wilderness, Kaingu Safari Lodge offers a magnificent safari experience in the heart of the African bush. Kaingu offers a unique stay for travellers wishing to get closer to the unspoilt wilderness of the 'real' Africa, experience the warm and welcoming people of Zambia and enjoy wildlife and scenery undisturbed.

The lodge, located on the banks of the stunningly beautiful Kafue River, was built with a lot of patience, good taste and an extraordinary sense for detail. Personal attention to each and every guest makes you feel at home instantly. It is a place to unwind, indulge in fresh cuisine prepared by local Chefs and be spoilt with an abundance of activities or, if you prefer, just relax and feel the heartbeat of Africa.

Set on raised individual private wooden decks, each overlooking their own piece of the river, Kaingu Safari Lodge comprises of 6 double Meru-style tents with en-suite bathrooms, indoor showers and an open-air shower or bath. The tent's additional thatched roof provide extra shade. Our Finfoot family house consists of 2 bedrooms (one queen, one twin), 2 en-suite bathrooms plus outside shower and a central living area opening onto a private deck overlooking the river. It's a perfect spot for a couple with children, or a small group of friends.

Surrounded by river and stunning bush everywhere you look, the lodge's surroundings provide the perfect backdrop for a range of activities including guided game viewing, birding and fishing, river cruises and island picnics to name a few.

The friendly staff like to share their culture, stories, traditional knowledge and craftsmanship with you.



# The Kafue National Park



Covering an area of 22,500 km<sup>2</sup>, Kafue National Park is 2<sup>nd</sup> largest in Africa and comprises many diverse habitats: it is traversed by the Kafue, Lufupa, Lunga and Luansanza Rivers. The adjoining peaceful stretches of riverine vegetation, dambos and wetlands, extensive miombo woodland with seasonal floodplains and swampland in the very north and south.

Owing to this varied habitat, Kafue is blessed with one of the **highest diversities** of mammals of all national parks in the world (158 species). Wildebeest, puku, red lechwe, Defassa waterbuck, reedbuck to name a few, and roan, sable or oribi sightings are not uncommon either. There is a high density of lion, while leopard are common in the central parts; species like cheetah and wild dog are seen too.

The **birdlife** is also spectacular. Over 515 species of birds inhabit the park and surrounding areas - from wattled and crowned crane, saddle billed stork, ground hornbill, Ross's turaco, African finfoot and Pel's fishing owl.

Only after some time here in the Kafue will you realize what is missing – other game drive vehicles, people and boats. It truly is one of the last wilderness areas of Africa.

The **Kafue National Park** offers with game drives, excellent walking safaris, canoe trails, boat cruises, fishing and wonderful relaxation an unforgettable safari experience.



# Notes, Terms & Conditions

- Package available from: 1<sup>st</sup> of March to 31<sup>st</sup> December 2016.
- Rates are per person sharing.
- Arrival & Departure option included in above rate: Arranged Road Transfers to and fro Lusaka.
- Fly In or Self Drive options available. Enquire for rates and itinerary.
- Rate includes Accommodation, Transfers, Meals & Snacks, Local drinks, Laundry service, Activities, 10% Service Charge, Kafue Conservation bed night levy, Kafue National Park Entry Fees.
- Rate excludes: Premium drinks, International airfares, Departures Taxes, Entry Visas, Travel insurance.
- Child policy:
  - Children under 5 years staying with 2 adults are free of charge
  - Children under 12 years: 50% off if sharing with 2 adults
  - We cannot take infants on any river activities. To participate in game drives the minimum age is 6 years old. Please be aware that the higher pitch of children's voices can cause reactions with certain dangerous game (Lions, Leopard, Elephant) and your guide may well choose to not approach such animals if children are on board. Unless you have booked a private vehicle then it is at the management and guides discretion if children from 6 – 12 will be joining game drives if other guests will be present on the vehicle.
- Bookings made on provisional basis must be confirmed within 14 days.
  - KaingU Safari Lodge reserves the right to cancel any booking that is not confirmed within this period.
- A deposit of 25% of the quoted rate is required to confirm the booking.
  - Full payment is due 30 days prior to arrival.
- Cancellation fees:
  - 90-31 days: 50% cancellation fee
  - 31-0 days: 100% cancellation fee
- Travellers entering South Africa from Zambia require a Yellow Fever Vaccination Certificate.
- Meet and Greet Service at Lusaka Airport is available (extra cost).
- Good physical condition is recommended for the walking and canoeing safaris.

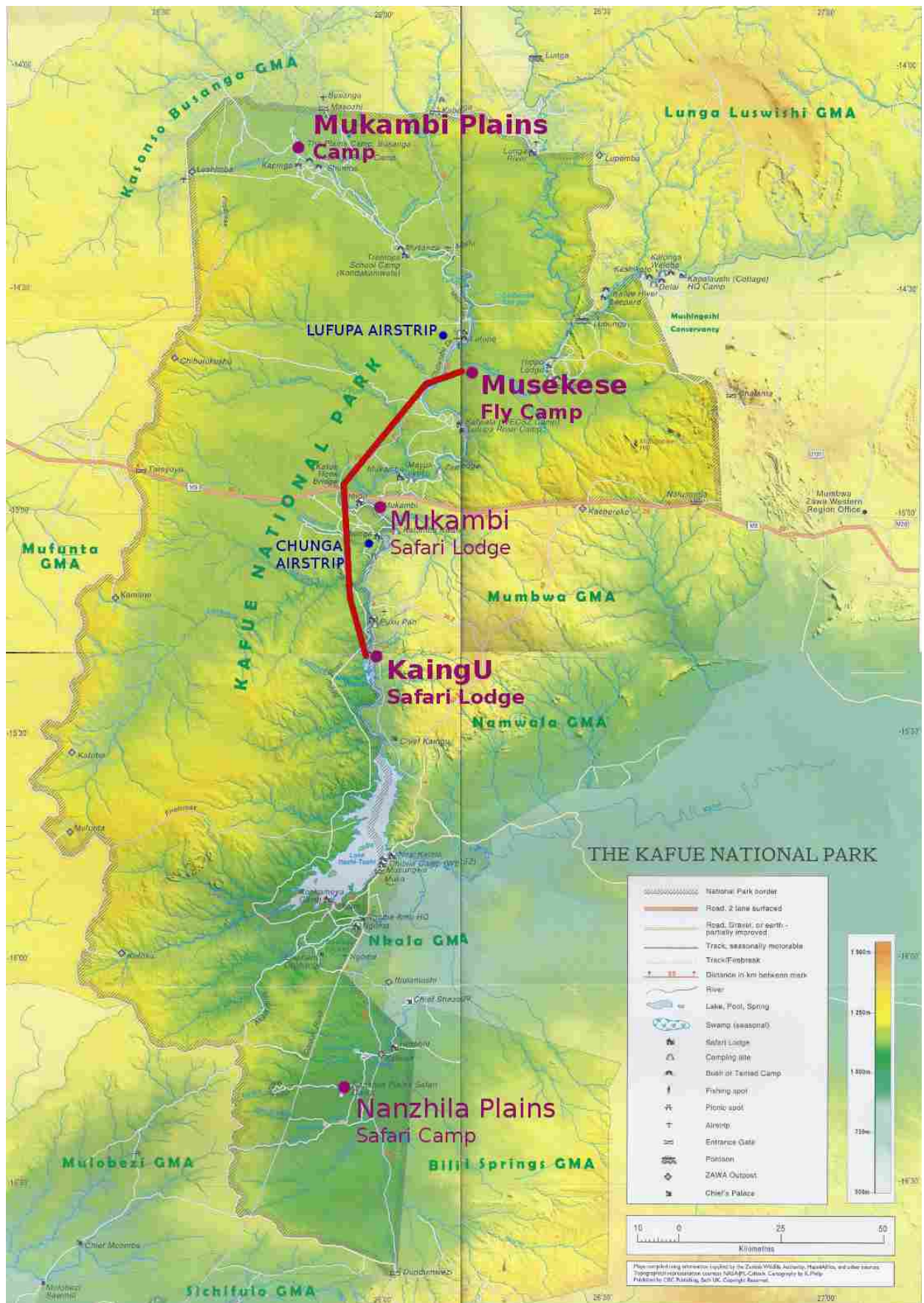
## Add on:

Any extra night at **KaingU** Safari Lodge only

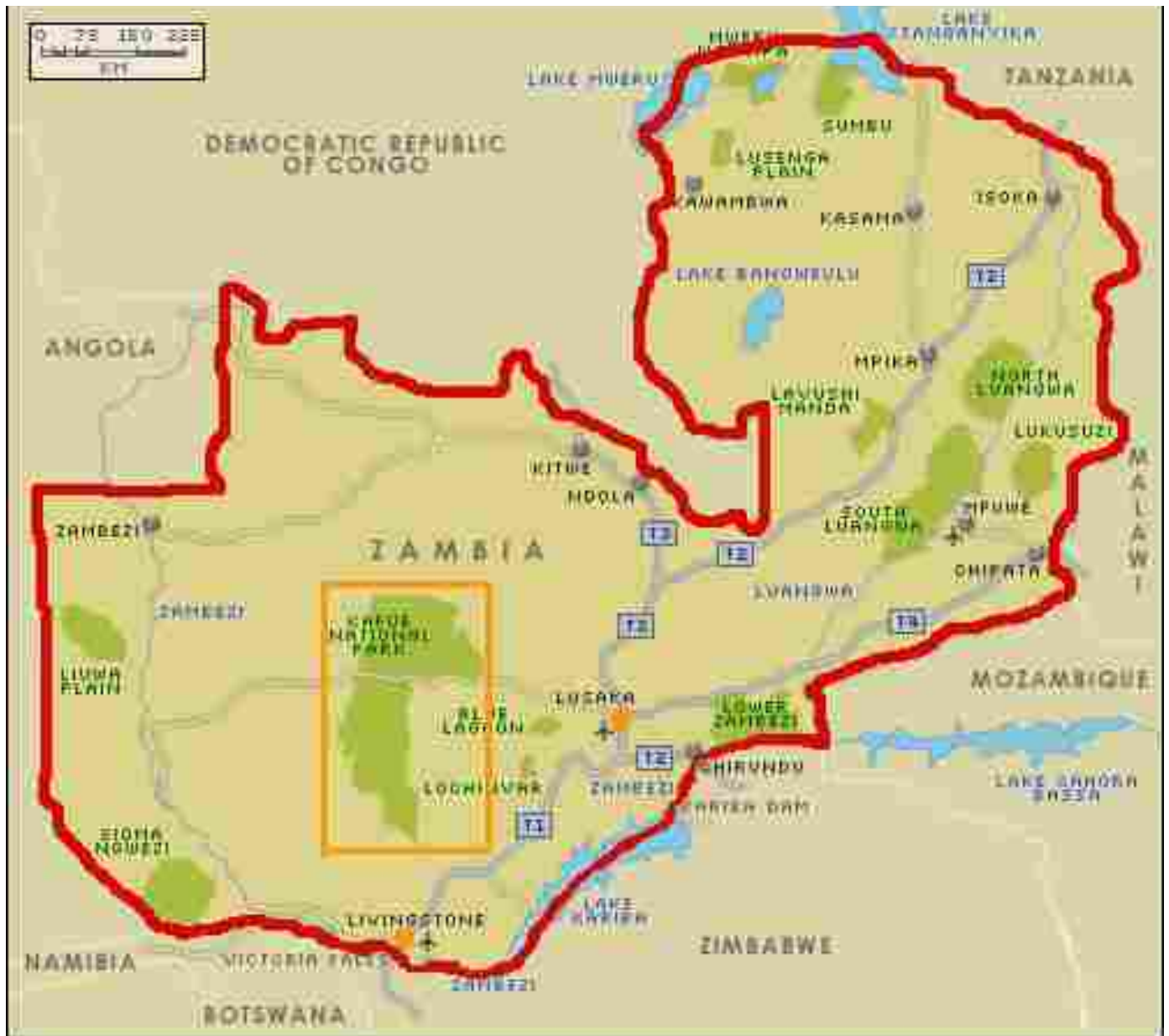
**\$390**

per person

# Map Kafue National Park



# Map: Zambia



# Add On & Save



## Add another wonderful destination in the vast Kafue National Park and save on travelling cost!

### MUKAMBI PLAINS CAMP

The Mukambi Plains Camp is the seasonal bush camp (open from July to November) located deep in the heart of the Busanga Plains. It is small and intimate and consists of only four big safari tents with en-suite open air bathrooms and a raised central area or boma underneath a magnificent Fig tree.

### MUSEKESE CAMP

'Musekese' (Monkey-Bread Tree) is situated on a small ridge overlooking a long and open seasonally inundated floodplain, beyond which is the main Kafue River. The sounds of the bush are in full flow, with leopard coughing at night and hippo snorting. The camp itself comprises of just four very well appointed 'Machaba' safari tents. Open air en-suite bathrooms come with traditional wood warmed bucket showers and flushing toilets, combining style with practicality for a comfortable stay. Bush chef Newton creates fantastic cuisine literally from a hole in the ground. With a focus on walking safaris and boating, classic game drives are also an option.

### NANZHILA PLAINS SAFARI CAMP

Nanzhila Plains Safari Camp is a must for those intrepid travellers wishing to experience life off the beaten track. Located in the far south of the Kafue NP. The intimate 12-bed lodge is the ideal spot for viewing the incredible diversity of wildlife that call the Park home. Being the most southerly of the parks lodges and the closest in proximity to Livingstone and the Victoria Falls, Nanzhila Plains Safari Camp is the ideal first (or last) stop on your Zambian safari adventure.

### LIVINGSTONE & THE MIGHTY VICTORIA FALLS